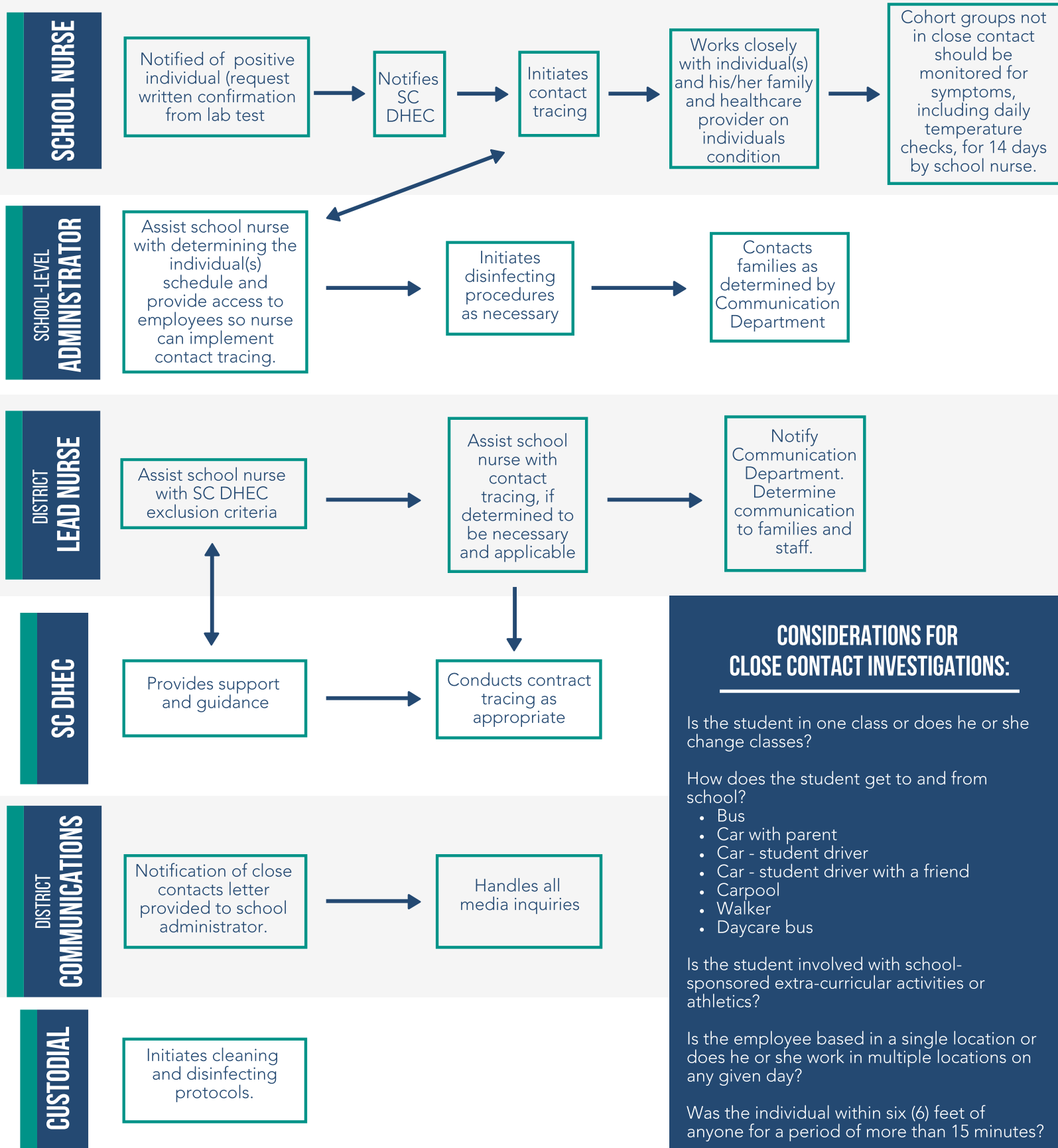


WORKFLOW AFTER POSSIBLE OR CONFIRMED COVID-19 CASE

School and district staff should use this document as a guide to provide clarity to the workflow process when a possible COVID-19 case is confirmed with a student or employee. To ensure consistency, everyone must adhere to this guide.



CONSIDERATIONS FOR CLOSE CONTACT INVESTIGATIONS:

Is the student in one class or does he or she change classes?

How does the student get to and from school?

- Bus
- Car with parent
- Car - student driver
- Car - student driver with a friend
- Carpool
- Walker
- Daycare bus

Is the student involved with school-sponsored extra-curricular activities or athletics?

Is the employee based in a single location or does he or she work in multiple locations on any given day?

Was the individual within six (6) feet of anyone for a period of more than 15 minutes?